



**Description:** LED fixture with direct light, particularly suitable for installation in harsh environments, resistant to impacts (IK10), water jets and corrosive environments. Can be installed on ceiling, wall and suspension. Suspension chains not included. Wall fixing brackets to be ordered separately.

**Body:** extruded aluminum profile with aluminum end caps painted in the same color as the body, corrosion resistant gray paint.

**Optical group:** luminaire consisting of:

- White painted wiring plate
- VSB diffuser in non-combustible sandblasted tempered glass (960 ° C), resistant to thermal shocks and impacts. Internal sealing gaskets in polyurethane foam. Fixing to the luminaire body by using stainless steel closing clips. Protection degree IP66.

**Wiring:** power supply 220-240V 0/50 / 60Hz with rigid cable, sect. 0.50 mm<sup>2</sup> and PVC-HT sheath resistant to 90 ° C according to CEI 20-20 standards. Terminal block with maximum allowed cable cross section of 2.5 mm<sup>2</sup>. Insulation class I. Suitable for installation on normally flammable surfaces.

- LED version with electronic driver with fixed output (ON / OFF), included
  - DALI LED dimmable version, with DALI dimmable electronic driver included.
- Versions with emergency kit (1/3 hours of autonomy) are available on request.

**Luminous source:** High efficiency LEDs arranged on rigid modules, color rendering CRI> 80 (CRI> 90 available on request), color temperature 4000K (LED diode selected 3 MacAdam ellipses in order to guarantee uniform chromaticity).

Life of the sources in normal conditions: over 50,000 hours L90 / B10 at Ta = 25 ° C.

Operating temperature from -25 ° C up to 35 ° C.

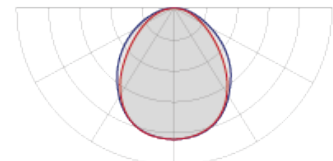
EXTREME versions available with operating temperatures from -40 ° C up to 75 ° C.

**Regulations:** appliance complies with the following standards:

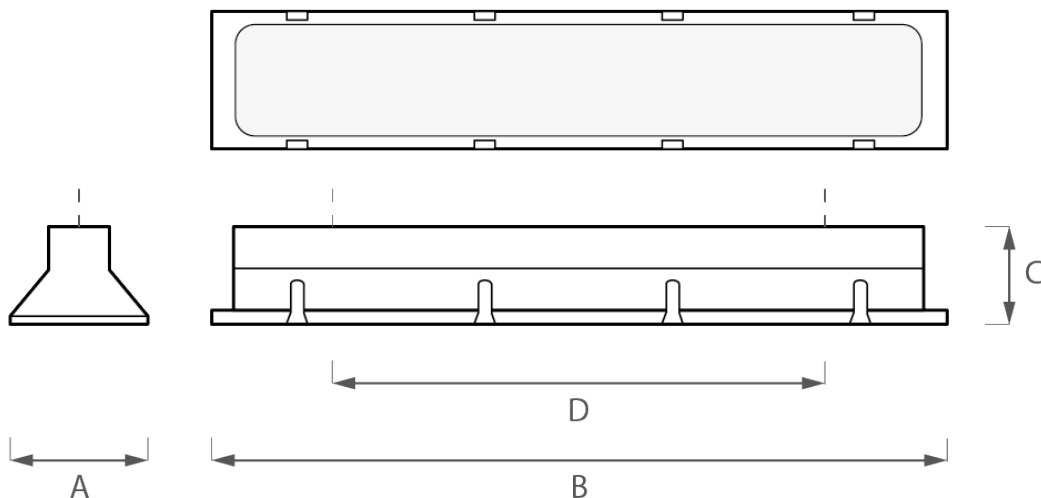
- |                |                  |                           |
|----------------|------------------|---------------------------|
| • EN 61547     | • IEC/TR 62471-2 | • EN 60598-2-13           |
| • EN 55015     | • EN 60061-1     | • EN 62471 (risk class 0) |
| • EN 61000-3-2 | • EN 62031       | • EN 62560                |
| • EN 61000-3-3 | • EN 62493       | • EN 60968                |
| • EN 60529     | • EN 60598-1     |                           |



Demonstration image



Photometric curve





Power [W]	Color temperature [K]	CRI	Effective flux [lm] *	Efficiency [lm/W]	Energetic class	Dimensions [mm]				Code / Wiring	
						A	B	C	D	LED	LED DALI
10	4000K	>80	1080	108	A++	624	105	75	534	459000092	459000108
12	4000K	>80	1300	108	A++	624	105	75	534	459000091	459000109
15	4000K	>80	1670	111	A++	624	105	75	534	459000093	459000110
18	4000K	>80	1990	110	A++	1224	105	75	1134	459000087	459000111
22	4000K	>80	2450	111	A++	1224	105	75	1134	459000078	459000112
30	4000K	>80	3370	112	A++	1224	105	75	1134	459000081	459000113
22	4000K	>80	2410	109	A++	1524	105	75	1434	459000082	459000114
27	4000K	>80	3030	112	A++	1524	105	75	1434	459000083	459000115
37	4000K	>80	4240	114	A++	1524	105	75	1434	459000077	459000116
18	4000K	>80	1950	108	A++	624	105	75	534	459000179	459000180
22	4000K	>80	2420	110	A++	624	105	75	534	459000183	459000184
30	4000K	>80	3320	110	A++	624	105	75	534	459000187	459000188
35	4000K	>80	3870	110	A++	1224	105	75	1134	459000172	459000191
42	4000K	>80	4760	113	A++	1224	105	75	1134	459000079	459000194
58	4000K	>80	6660	114	A++	1224	105	75	1134	459000071	459000197
44	4000K	>80	4880	110	A++	1524	105	75	1434	459000198	459000199
53	4000K	>80	5960	112	A++	1524	105	75	1434	459000073	459000202
71	4000K	>80	8150	114	A++	1524	105	75	1434	459000080	459000205

Power [W]	Color temperature [K]	CRI	Effective flux [lm] *	Efficiency [lm/W]	Energetic class	Dimensions [mm]				Code / Wiring	
						A	B	C	D	LED-E	LED-E DALI
10	4000K	>80	1080	108	A++	624	105	75	534	459000173	459000176
12	4000K	>80	1300	108	A++	624	105	75	534	459000174	459000177
15	4000K	>80	1670	111	A++	624	105	75	534	459000175	459000178
18	4000K	>80	1990	110	A++	1224	105	75	1134	459000097	459000107
22	4000K	>80	2450	111	A++	1224	105	75	1134	459000098	459000126
30	4000K	>80	3370	112	A++	1224	105	75	1134	459000099	459000127
22	4000K	>80	2410	109	A++	1524	105	75	1434	459000100	459000128
27	4000K	>80	3030	112	A++	1524	105	75	1434	459000101	459000129
37	4000K	>80	4240	114	A++	1524	105	75	1434	459000102	459000130
18	4000K	>80	1950	108	A++	624	105	75	534	459000181	459000182
22	4000K	>80	2420	110	A++	624	105	75	534	459000185	459000186
30	4000K	>80	3320	110	A++	624	105	75	534	459000189	459000190
35	4000K	>80	3870	110	A++	1224	105	75	1134	459000192	459000193
42	4000K	>80	4760	113	A++	1224	105	75	1134	459000195	459000196
44	4000K	>80	4880	110	A++	1524	105	75	1434	459000200	459000201
53	4000K	>80	5960	112	A++	1524	105	75	1434	459000203	459000204

\* Actual flow may have a tolerance of ± 10%.

**INSTALLATION ACCESSORIES**



Adjustable wall fixing bracket.  
Material white painted galvanized steel sheet.  
Including fixing screws.  
2-piece kit.

**COD. KPR459023**